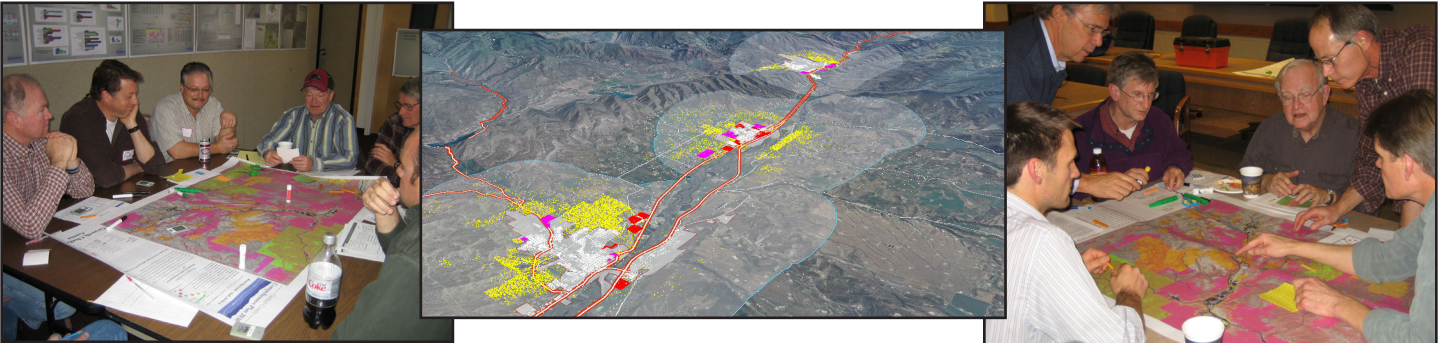


A Preferred Alternative for Future Growth is Emerging!

Initial direction received so far indicates the County should...

- Encourage new growth in and around existing communities
- Promote cluster development in rural areas
- Industrial development to occur in designated areas
- Share sales tax revenues between communities
- Agricultural lands to have lower base densities, with incentives
- Require new growth to pay its own way
- Protect river access, natural resources and rural character
- Improve City/County Coordination

What Do You Think? We Need Your Input!



Upcoming Public Meetings

When

Monday, April 5th

Tuesday, April 6th

Wednesday, April 7th

Where

Rifle Health and Human Services Building

New Castle Community Center

Glenwood Springs Community Center

Silt Burning Mountains Fire Protect. District

Carbondale Town Hall

Parachute/Battlement Mesa Activity Center

All meetings will be held from 6:00pm to 8:30pm

If you don't participate in this process, you will be leaving the decisions to others!

To learn more about the process and updated information on the Comprehensive Plan 2030, visit:

www.garfieldcomprehensiveplan2030.com